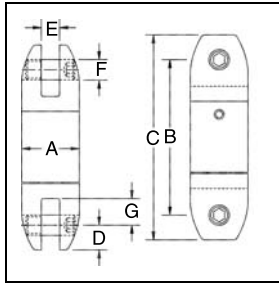


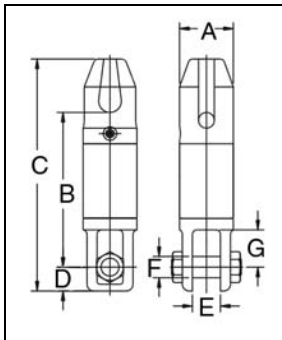
Crosby® Angular Contact Bearing Swivels



AS-7 Bullet Style Jaw & Jaw

AS-7 BULLET STYLE JAW & JAW				Dimensions (mm)						
Working Load Limit (t)*	Wire Line Size (mm)	AS-7 Stock No.	Weight Each (kg)	A	B	C	D	E	F	G
.40	3	1016604	.18	22.4	60.5	79.5	9.65	6.35	7.85	10.2
.68	6	1016611	.50	33.3	90.0	113	11.2	7.85	9.65	14.2
1.35	10	1016622	.82	41.4	103	132	14.2	12.7	11.2	20.6
2.70	13	1016631	1.72	51.0	138	179	20.6	19.1	16.0	23.9
4.50	16	1016640	3.63	63.5	197	256	28.7	25.4	22.4	39.5
7.65	19	1016649	6.58	76.0	251	314	31.8	33.3	25.4	54.0
9.00	22	1016652	18.1	102	334	425	44.5	44.5	38.1	82.5
13.5	25	1016658	18.1	102	334	425	44.5	44.5	38.1	82.5
22.5	32	1016662	38.1	127	405	527	60.5	51.0	51.0	93.5
31.5	38	1016667	38.1	127	405	527	60.5	51.0	51.0	93.5

* Ultimate Load is 5 times the Working Load Limit.
Individually Proof Tested to 2 times the Working Load Limit.

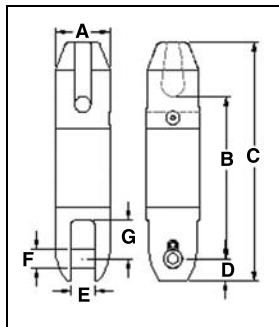


AS-11 Thimble & Jaw

AS-11 THIMBLE & JAW				Dimensions (mm)						
Working Load Limit (t)*	Wire Line Size (mm)	AS-11 Stock No.	Weight Each (kg)	A	B	C	D	E	F	G
7.65	19	1017020	12.0	76.2	22.0	330	34.0	39.6	30.2	53.1
13.5	25	1017029	24.0	102	296	445	44.5	45.0	38.1	89.0

* Ultimate Load is 5 times the Working Load Limit.
Individually Proof Tested to 2 times the Working Load Limit.

AS-14 Thimble & Bullet

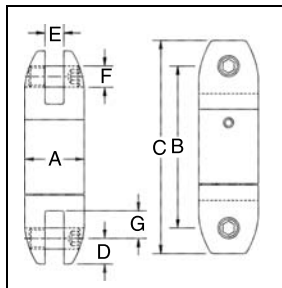


AS-14 THIMBLE & BULLET				Dimensions (mm)						
Working Load Limit (t)*	Wire Line Size (mm)	AS-14 Stock No.	Weight Each (kg)	A	B	C	D	E	F	G
7.7	20	1017255	9.0	76.2	229	337	31.8	33.3	25.4	54.1
13.6	26	1017258	18.0	102	292	441	44.5	44.5	38.1	82.6
22.7	32	1017261	37.0	127	363	538	60.5	50.8	50.8	93.7

* Ultimate Load is 5 times the Working Load Limit.
Individually Proof Tested to 2 times the Working Load Limit.

AS-17 Bullet Style Jaw & Jaw Slurry Swivel

- The Crosby AS-17 Slurry Swivel is a zinc plated Bullet Type Swivel (AS-7), designed with two rubber lip style seals about the shaft. The threaded cap is sealed with a silicone sealant and secured with a set screw. The swivels are provided with an Alemite grease fitting for easy lubrication.



AS-17 BULLET JAW SLURRY SWIVEL				Dimensions (mm)						
Working Load Limit (t)*	Wire Line Size (mm)	AS-17 Stock No.	Weight Each (kg)	A	B	C	D	E	F	G
7.65	19	8013342	6.57	76.2	257	321	31.8	33.3	25.4	54.1
13.5	25	8013343	18.1	102	343	432	44.5	44.5	38.1	82.5
22.5	32	8013376	38.1	127	410	531	60.5	51.0	51.0	93.7
31.5	38	8013344	38.1	127	410	531	60.5	51.0	51.0	93.7
40.5	-	2016585	68.0	152	514	666	76.2	64.3	57.2	69.9

* Ultimate Load is 5 times the Working Load Limit.
Individually Proof Tested to 2 times the Working Load Limit.