

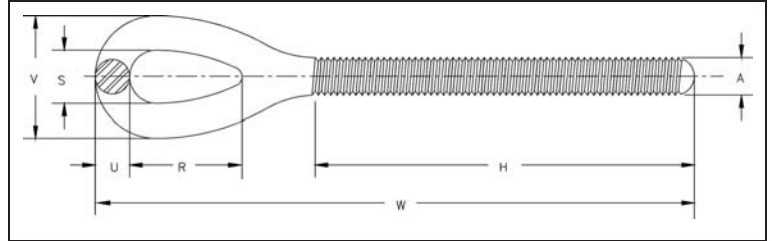
Turnbuckle - Eye End Fittings



Fatigue Rated

EYE END FITTINGS

- Quenched and Tempered.
- Hot Dip galvanized steel.
- Turnbuckle eyes are forged elongated, by design, to maximize easy attachment in system and minimize stress in the eye. For turnbuckle sizes 6 mm through 64 mm, a shackle one size smaller can be reeved through eye.
- Modified UNJ thread for improved fatigue properties.
- Fatigue Rated.



HG-4037 Eye End Fittings

Shank Diameter & Take Up (mm)	RH Eye Stock No.	LH Eye Stock No.	Working Load Limit (t)	Weight Each (kg)	Dimensions (mm)						
					A	H	R	S	U	V	W
* 6.35 x 102	1071057	1071672	.23	.03	6.35	65.8	20.6	8.64	5.59	19.8	106
* 7.94 x 114	1071075	1071690	.36	.06	7.94	76.2	24.1	11.2	7.11	25.4	127
* 9.53 x 152	1071093	1071716	.54	.10	9.53	98.6	28.7	13.5	8.64	30.7	155
12.7 x 152	1071119	1071734	1.00	.23	12.7	106	35.8	18.0	11.2	40.4	188
12.7 x 229	1071137	1071752	1.00	.27	12.7	145	35.8	18.0	11.2	40.4	226
12.7 x 305	1071155	1071770	1.00	.31	12.7	183	35.8	18.0	11.2	40.4	264
15.9 x 305	1071173	1071798	1.59	.37	15.9	113	45.7	22.4	12.7	47.8	212
15.9 x 229	1071191	1071814	1.59	.43	15.9	151	45.7	22.4	12.7	47.8	250
15.9 x 305	1071217	1071832	1.59	.49	15.9	189	45.7	22.4	12.7	47.8	289
19.1 x 152	1071235	1071850	2.36	.62	19.1	116	53.1	25.4	16.0	57.4	235
19.1 x 229	1071253	1071878	2.36	.70	19.1	154	53.1	25.4	16.0	57.4	273
19.1 x 305	1071271	1071896	2.36	.78	19.1	192	53.1	25.4	16.0	57.4	311
19.1 x 457	1071299	1071912	2.36	.95	19.1	268	53.1	25.4	16.0	57.4	387
22.2 x 305	1071315	1071930	3.27	1.18	22.2	198	60.5	31.8	19.1	69.9	333
22.2 x 457	1071333	1071958	3.27	1.42	22.2	275	60.5	31.8	19.1	69.9	409
25.4 x 152	1071351	1071976	4.54	1.43	25.4	129	76.2	36.3	22.4	81.0	279
25.4 x 305	1071379	1071994	4.54	1.73	25.4	205	76.2	36.3	22.4	81.0	356
25.4 x 457	1071397	1072010	4.54	2.03	25.4	281	76.2	36.3	22.4	81.0	432
25.4 x 610	1071413	1072038	4.54	2.34	25.4	357	76.2	36.3	22.4	81.0	508
31.8 x 305	1071431	1072056	6.89	3.21	31.8	213	91.2	46.2	28.4	103	411
31.8 x 457	1071459	1072074	6.89	3.68	31.8	289	91.2	46.2	28.4	103	487
31.8 x 610	1071477	1072092	6.89	4.15	31.8	365	91.2	46.2	28.4	103	564
38.1 x 305	1071495	1072118	9.71	4.68	38.1	222	104	53.8	31.8	117	441
38.1 x 457	1071510	1072136	9.71	5.37	38.1	298	104	53.8	31.8	117	517
38.1 x 610	1071538	1072154	9.71	6.05	38.1	375	104	53.8	31.8	117	594
44.5 x 457	1071574	1072190	12.7	7.93	44.5	309	118	60.5	38.1	137	538
44.5 x 610	1071592	1072216	12.7	8.85	44.5	385	118	60.5	38.1	137	614
51.0 x 610	1071618	1072234	16.8	13.1	50.8	396	148	68.3	44.5	157	701
63.5 x 610	1071636	1072252	27.2	21.0	63.5	446	165	79.2	50.8	181	752
70.0 x 610	1071654	1072270	34.0	27.3	69.9	449	178	82.6	57.2	197	785

* Mechanical Galvanized

Rigging
Accessories